

# AB2 Series / Two Way Round Body Threaded



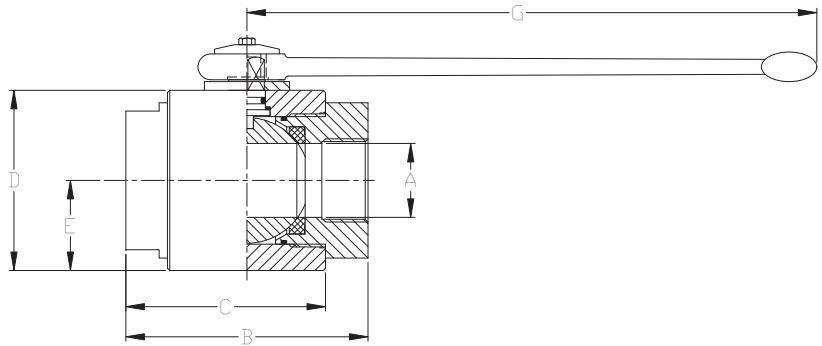
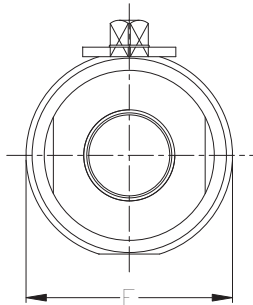
- Carbon steel construction with Silver Trivalent plating
- 316 stainless steel available from stock
- Unrestricted bore available through 2" size
- POM seats & Buna O-rings standard on carbon steel valves
- Optional seal materials available for extreme temperature applications & fluid compatibility (Consult Factory)

FLOW, NEEDLE & CHECK VALVES

HYDRAULIC BALL VALVES

WELD COUPLINGS

FLANGES



Standard handle supplied is C81302B. Refer to page 47 for details.

| AB2 SERIES FULL BORE |          |         |        |      |      |      |      |      |       |          |
|----------------------|----------|---------|--------|------|------|------|------|------|-------|----------|
| NPT                  | SAE      | PSI MAX | A BORE | B    | C    | D    | E    | F    | G     | WEIGHT   |
| AB2 N1-1/4           | AB2 S#20 | 5075    | 1.26   | 4.53 | 3.74 | 3.66 | 1.83 | 3.88 | 11.69 | 8.3 LBS  |
| AB2 N1-1/2           | AB2 S#24 | 5075    | 1.57   | 5.16 | 4.25 | 4.21 | 2.11 | 4.45 | 11.69 | 12.5 LBS |
| AB2 N2               | AB2 S#32 | 5075    | 1.97   | 5.51 | 4.53 | 4.49 | 2.24 | 4.84 | 11.69 | 14.6 LBS |

| AB2 SERIES REDUCED BORE |     |         |        |      |      |      |      |      |       |          |
|-------------------------|-----|---------|--------|------|------|------|------|------|-------|----------|
| NPT                     | SAE | PSI MAX | A BORE | B    | C    | D    | E    | F    | G     | WEIGHT   |
| AB2N2R                  | N/A | 5075    | 1.57   | 5.16 | 4.25 | 3.86 | 1.89 | 4.02 | 11.69 | 13.5 LBS |

NPT threads in accordance with ANSI B.1.20.1 specifications.  
SAE threads in accordance with SAE J1926/1 specifications.



# AB2 Series / Two Way Round Body Threaded

## Model Code Breakdown

AB2 N1/2 \_ - 1 1 D B \_

### Valve Series •

### Connection Type/Size •

|   |                     |
|---|---------------------|
| N | NPT Pipe Thread     |
| S | SAE Straight Thread |
| B | BSPP Thread         |

### Bore Restriction •

|       |                   |
|-------|-------------------|
| blank | Unrestricted Bore |
| R     | Restricted Bore   |

### Body & Adapter Material •

|   |                     |
|---|---------------------|
| 1 | Carbon Steel        |
| 2 | 316 Stainless Steel |

### Ball & Stem Material •

|   |                     |
|---|---------------------|
| 1 | Carbon Steel        |
| 2 | 316 Stainless Steel |

• **Locking Kit or Optional Handle Code**  
(See pages 46 & 47)

• **Adapter & Stem Seals**

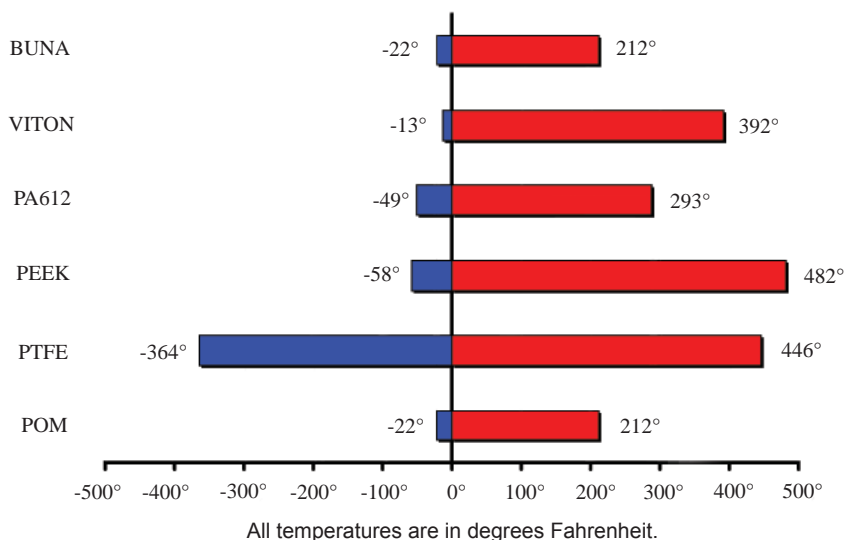
|   |                    |
|---|--------------------|
| B | Buna- Standard     |
| V | Viton (Std on S/S) |

• **Ball & Stem Seats**

|   |                        |
|---|------------------------|
| D | POM- Standard          |
| P | PEEK                   |
| N | PA612                  |
| X | PTFE w/metallic insert |

- Please consult your system's seal manufacturer for recommendation of seal selection, as Anchor Fluid Power does not accept responsibility for seal selection.

## MAXIMUM & MINIMUM WORKING TEMPERATURES FOR SEAL MATERIALS



FLOW, NEEDLE & CHECK VALVES

HYDRAULIC BALL VALVES

WELD COUPLINGS

FLANGES