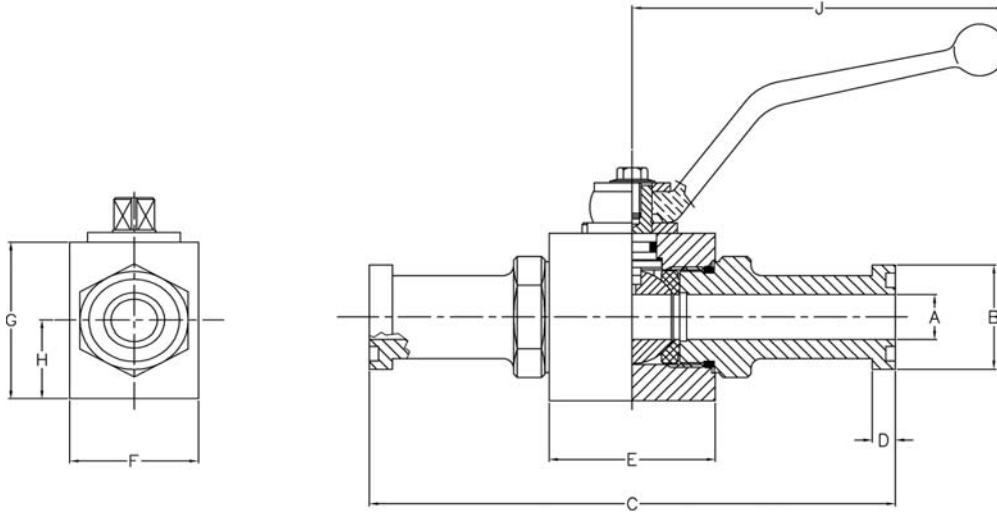


AES Series / Two-Way Block Body Flange Head



- Carbon steel construction with Silver Trivalent plating
- 316 stainless steel available from stock
- POM seats & Buna O-rings standard on carbon steel valves
- Optional seal materials available for extreme temperature applications & fluid compatibility (Consult Factory)



Standard handles supplied are:
Refer to page 47 for details.

#8
#12 & #16

C1010ZB
C1200ZB

FLOW, NEEDLE & CHECK VALVES

HYDRAULIC BALL VALVES

WELD COUPLINGS

FLANGES

AES SERIES - CODE 61													
SERIES	PSI MAX	A BORE	B	C	D	E	F		G		H	J	WEIGHT
							CARBON	STAINLESS	CARBON	STAINLESS			
AES3#8	5000	.51	1.19	5.94	.27	1.89	1.69	1.77	1.46	1.77	.71	4.31	2.1 LBS
AES3#12	5000	.75	1.50	6.38	.27	2.44	2.17	2.17	1.77	2.17	.91	7.00	3.7 LBS
AES3#16	5000	.98	1.75	7.00	.32	2.60	2.56	2.56	2.17	2.56	1.14	7.00	5.5 LBS

AES SERIES - CODE 62													
SERIES	PSI MAX	A BORE	B	C	D	E	F		G		H	J	WEIGHT
							CARBON	STAINLESS	CARBON	STAINLESS			
AES6#8	6000	.51	1.25	5.94	.31	1.89	1.69	1.77	1.46	1.77	.71	4.31	2.1 LBS
AES6#12	6000	.75	1.63	6.85	.35	2.44	2.17	2.17	1.77	2.17	.91	7.00	3.9 LBS
AES6#16	5000	.98	1.87	7.80	.38	2.60	2.56	2.56	2.17	2.56	1.14	7.00	5.9 LBS



AES Series / Two-Way Block Body Flange Head

Model Code Breakdown

AES3 #16 - 1 1 D B _

Valve Series

AES3	Code 61
AES6	Code 62

Connection Size

Body & Adapter Material

1	Carbon Steel
2	316 Stainless Steel

Ball & Stem Material

1	Carbon Steel
2	316 Stainless Steel

Locking Kit or Optional Handle Code

(See pages 46 & 47)

Adapter & Stem Seals

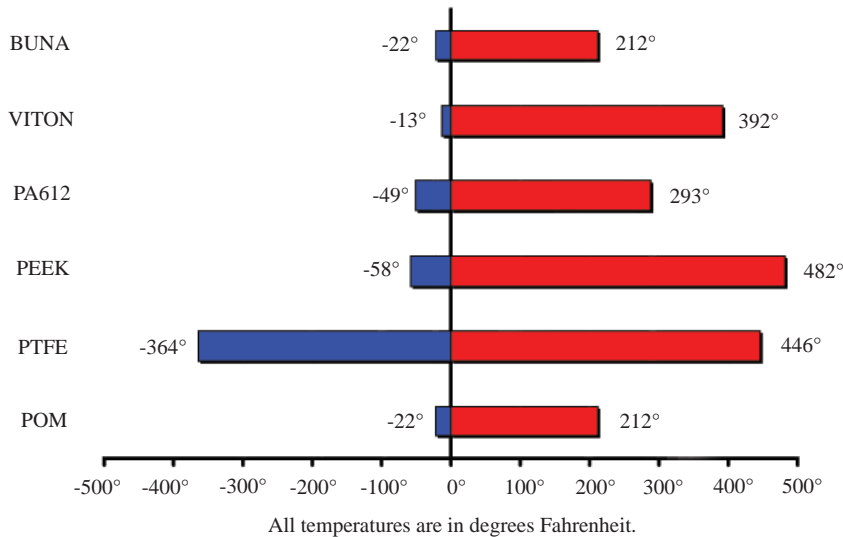
B	Buna- Standard
V	Viton (Std on S/S)

Ball & Stem Seats

D	POM- Standard
P	PEEK
N	PA612
X	PTFE w/metallic insert

- Please consult your system's seal manufacturer for recommendation of seal selection, as Anchor Fluid Power does not accept responsibility for seal selection.

MAXIMUM & MINIMUM WORKING TEMPERATURES FOR SEAL MATERIALS



FLOW, NEEDLE & CHECK VALVES

HYDRAULIC BALL VALVES

WELD COUPLINGS

FLANGES