

Figure 1

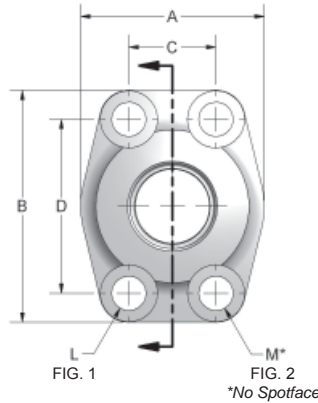


FIG. 1
FIG. 2
*No Spotface

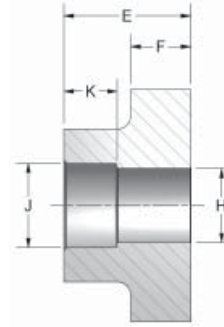


Figure 2

CODE 61 DEEP SOCKET WELD - TUBE

PART NO. O-RING FIG. 1	PART NO. FLAT FACE FIG. 2	TUBE SIZE	PAD SIZE	A	B	C	D	E	F	G	H	J	K	L	M UNC-2B	MOUNTING HARDWARE	
																O-RING	SHCS
W51-12-12	W5-12-12	.75	.75	1.97	2.56	.875	1.875	1.42	.71	1.250	.625	.752	.560	.406	3/8-16	214	3/8-16X1.50
W51-16-12	W5-16-12	1.00	.75	1.97	2.56	.875	1.875	1.42	.71	1.250	.750	1.002	.560	.406	3/8-16	214	3/8-16X1.50
W51-16-16	W5-16-16	1.00	1.00	2.17	2.75	1.031	2.062	1.50	.71	1.560	.875	1.002	.630	.406	3/8-16	219	3/8-16X1.50
W51-20-16	W5-20-16	1.25	1.00	2.17	2.75	1.031	2.062	1.50	.71	1.560	1.000	1.252	.630	.406	3/8-16	219	3/8-16X1.50
W51-20-20	W5-20-20	1.25	1.25	2.68	3.12	1.188	2.312	1.61	.83	1.750	1.125	1.252	.690	.469	7/16-14	222	7/16-14X1.75
W51-24-20	W5-24-20	1.50	1.25	2.68	3.12	1.188	2.312	1.61	.83	1.750	1.250	1.502	.690	.469	7/16-14	222	7/16-14X1.75
W51-24-24	W5-24-24	1.50	1.50	3.07	3.66	1.406	2.750	1.77	.98	2.115	1.375	1.502	.750	.531	1/2-13	225	1/2-13X1.75
W51-28-24	W5-28-24	1.75	1.50	3.07	3.66	1.406	2.750	1.77	.98	2.115	1.500	1.752	.750	.531	1/2-13	225	1/2-13X1.75
W51-32-32	W5-32-32	2.00	2.00	3.54	4.00	1.688	3.062	1.77	.98	2.490	1.875	2.002	.870	.531	1/2-13	228	1/2-13X1.75
W51-36-32	W5-36-32	2.25	2.00	3.54	4.00	1.688	3.062	1.77	.98	2.490	2.000	2.252	.870	.531	1/2-13	228	1/2-13X1.75
W51-40-40	W5-40-40	2.50	2.50	4.09	4.49	2.000	3.500	1.97	.98	2.995	2.375	2.502	1.000	.531	1/2-13	232	1/2-13X1.75
W51-44-40	W5-44-40	2.75	2.50	4.09	4.49	2.000	3.500	1.97	.98	2.995	2.500	2.752	1.000	.531	1/2-13	232	1/2-13X1.75

CODE 62 DEEP SOCKET WELD - TUBE

PART NO. O-RING FIG. 1	PART NO. FLAT FACE FIG. 2	TUBE SIZE	PAD SIZE	A	B	C	D	E	F	G	H	J	K	L	M UNC-2B	MOUNTING HARDWARE	
																O-RING	SHCS
W83-12-12	W82-12-12	.75	.75	2.17	2.80	.937	2.000	1.38	.83	1.250	.627	.752	.560	.406	3/8-16	214	3/8-16X1.50
W83-16-12	W82-16-12	1.00	.75	2.17	2.80	.937	2.000	1.38	.83	1.250	.752	1.002	.560	.406	3/8-16	214	3/8-16X1.50
W83-16-16	W82-16-16	1.00	1.00	2.56	3.19	1.093	2.250	1.65	.98	1.560	.877	1.002	.630	.492	7/16-14	219	7/16-14X1.75
W83-20-16	W82-20-16	1.25	1.00	2.56	3.19	1.093	2.250	1.65	.98	1.560	1.002	1.252	.630	.492	7/16-14	219	7/16-14X1.75
W83-20-20	W82-20-20	1.25	1.25	3.07	3.75	1.250	2.625	1.77	1.06	1.750	1.127	1.252	.690	.531	1/2-13	222	1/2-13X1.75
W83-24-20	W82-24-20	1.50	1.25	3.07	3.75	1.250	2.625	1.77	1.06	1.750	1.252	1.502	.690	.531	1/2-13	222	1/2-13X1.75
W83-24-24	W82-24-24	1.50	1.50	3.70	4.41	1.437	3.125	1.97	1.18	2.115	1.377	1.502	.750	.656	5/8-11	225	5/8-11X2.25
W83-28-24	W82-28-24	1.75	1.50	3.70	4.41	1.437	3.125	1.97	1.18	2.115	1.502	1.752	.750	.656	5/8-11	225	5/8-11X2.25
W83-32-32	W82-32-32	2.00	2.00	4.50	5.28	1.750	3.812	2.56	1.46	2.490	1.877	2.002	.870	.781	3/4-10	228	3/4-10X2.75
W83-36-32	W82-36-32	2.25	2.00	4.50	5.28	1.750	3.812	2.56	1.46	2.490	2.002	2.252	.870	.781	3/4-10	228	3/4-10X2.75