

# AV2 Series/Two-Way Excavator Style



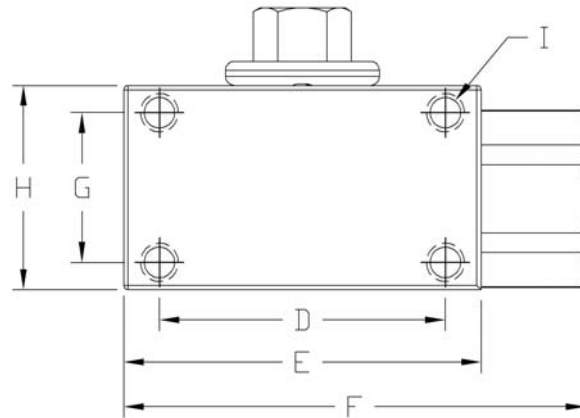
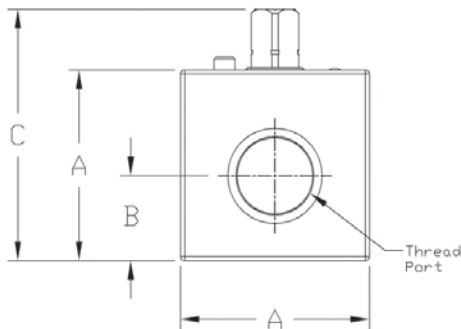
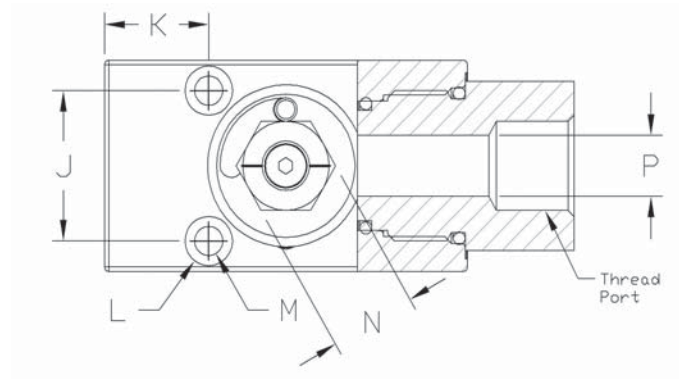
- Hex stem eliminates need for attached handle
- Detented stop washer prevents accidental actuation
- Shock resistant PA612 seats good to 293°F (Viton O-rings rated to 392°F)
- Mounting holes standard
- Max pressure of 7250 PSI on all sizes
- No handle available for this series

FLOW, NEEDLE & CHECK VALVES

HYDRAULIC BALL VALVES

WELD COUPLINGS

FLANGES



AV2 SERIES																	
NPT	SAE	A	B	C	D	E	F	G	H	I	J	K	L	M	N	P	WEIGHT
AV2N1/2	AV2S#8	1.77	0.79	2.74	2.52	3.15	4.07	1.30	2.46	M8 X 1.25	1.26	0.91	0.41	0.25	0.75	0.51	2.9 LBS
AV2N3/4	AV2S#12	2.17	0.92	2.89	3.15	3.98	5.10	1.69	3.05	M8 X 1.25	1.57	1.00	0.53	0.32	0.94	0.79	5.3 LBS
AV2N1	AV2S#16	2.56	1.16	3.29	3.54	4.13	5.26	2.09	3.44	M8 X 1.25	1.89	1.08	0.53	0.32	0.94	0.98	7.6 LBS
AV2N1-1/4R	AV2S#20R	2.56	1.16	3.29	3.54	4.13	5.26	2.09	3.44	M8 X 1.25	1.89	1.08	0.53	0.32	0.94	0.98	7.2 LBS
AV2N1-1/4	AV2S#20	3.15	1.32	3.88	3.39	4.13	5.26	2.52	4.07	M8 X 1.25	2.36	0.96	0.53	0.32	1.26	1.26	11.0 LBS

## Model Code Breakdown

AV2 N1/2 \_ - 1 1 N V

**Valve Series**

**Connection Type/Size**

N	NPT Pipe Thread
S	SAE Straight Thread
B	BSPP Thread

**Bore Restriction**

blank	Unrestricted Bore
R	Restricted Bore

**Body & Adapter Material**

1	Carbon Steel
---	--------------

**Adapter & Stem Seals**

V	Viton (Standard)
---	------------------

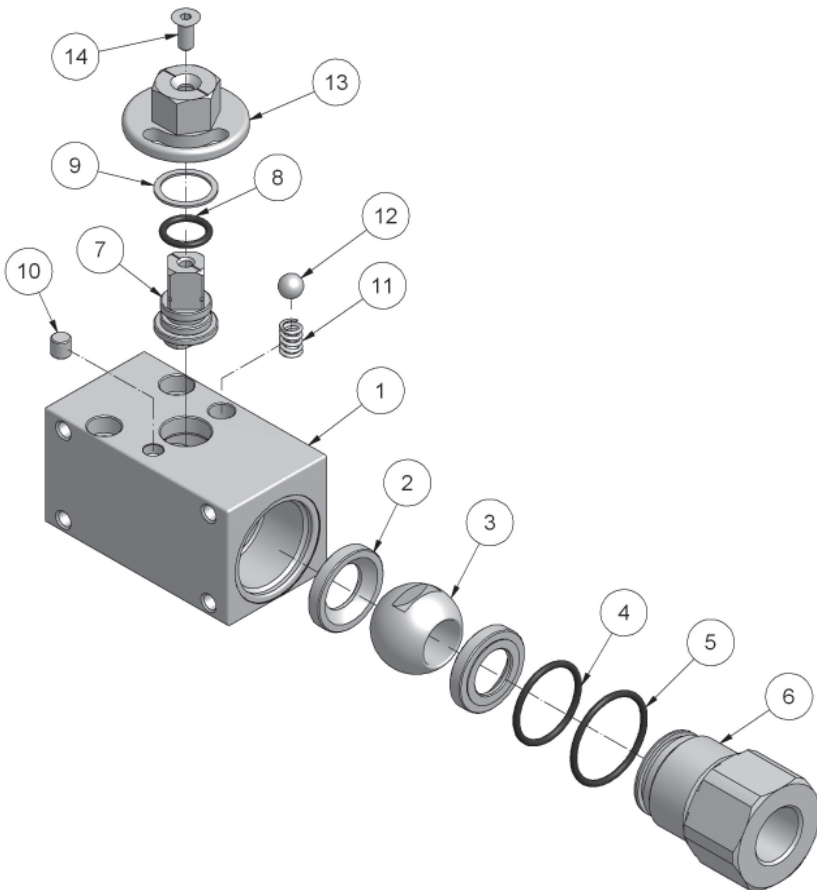
**Ball & Stem Seats**

N	PA612 (Standard)
---	------------------

**Ball & Stem Material**

1	Carbon Steel
---	--------------

- Please consult your system's seal manufacturer for recommendation of seal selection, as Anchor Fluid Power does not accept responsibility for seal selection.



Parts List		
ITEM	QTY	PART NUMBER
1	1	AV2 Valve Body
2	2	Ball Seats
3	1	Ball
4	1	Adapter O-Ring (Small)
5	1	Adapter O-Ring (Large)
6	1	Adapter
7	1	Stem
8	1	Stem O-Ring
9	1	Stem Seat
10	1	Stop Pin
11	1	Spring
12	1	Detent Ball
13	1	Alignment Stop
14	1	Screw