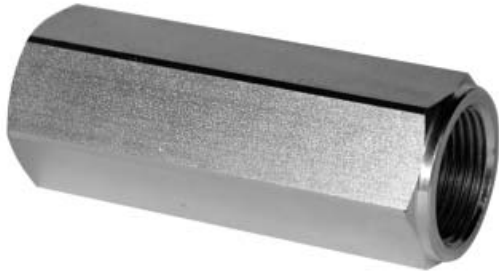
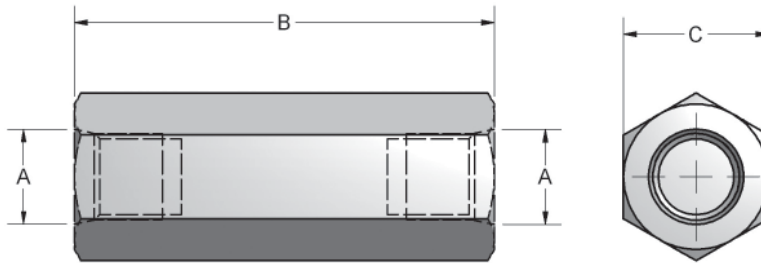
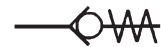


Check Valves (Carbon Steel)



- NPTF & SAE Connections
- Carbon Steel With Zinc Dichromate Plating
- Available in 7 PSI & 65 PSI Spring Cracking Pressures
- Metal to Metal Seat
- Hardened Poppet



CHECK VALVES					
A		B	C	MAX PSI	WEIGHT (LBS)
NPTF	SAE				
1/4"	#4	2.17	.75	5700	.2
3/8"	N/A	2.68	.95	5700	.4
N/A	#6	2.28	.75	5700	.2
1/2"	N/A	2.95	1.06	5700	.5
N/A	#8	2.72	.95	5700	.4
3/4"	#12	3.48	1.38	5700	1.0
1"	#16	4.33	1.61	5000	1.6
1 1/4"	#20	4.72	2.17	5000	3.4
1 1/2"	#24	5.43	2.56	5000	5.6
2"	#32	5.43	2.95	4500	6.7

FLOW, NEEDLE & CHECK VALVES

HYDRAULIC BALL VALVES

WELD COUPLINGS

FLANGES

Model Code Breakdown

C N 1/2 - 1 - 7

Valve Series •

Thread Type •

N	NPTF Pipe Thread
S#	SAE Straight Thread
B#	BSPP Thread

Thread Size •

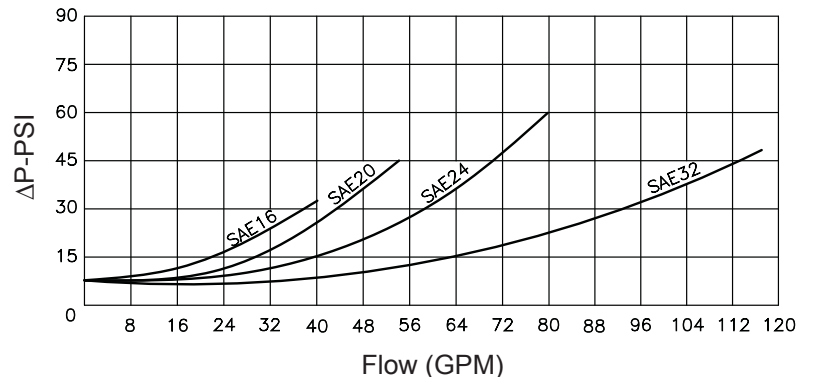
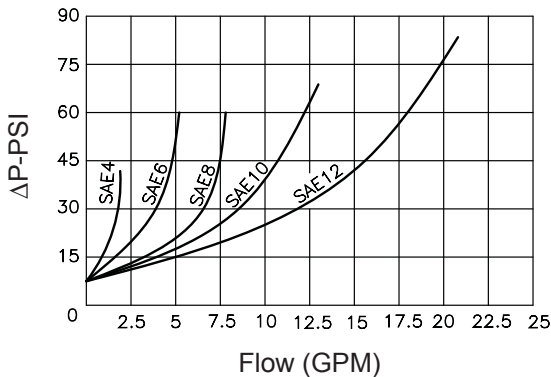
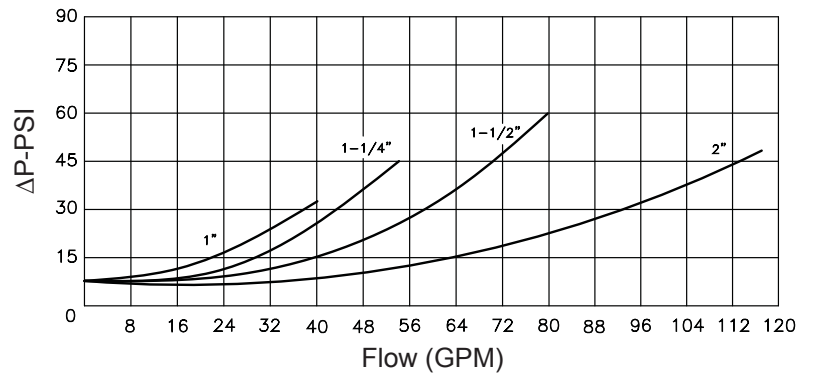
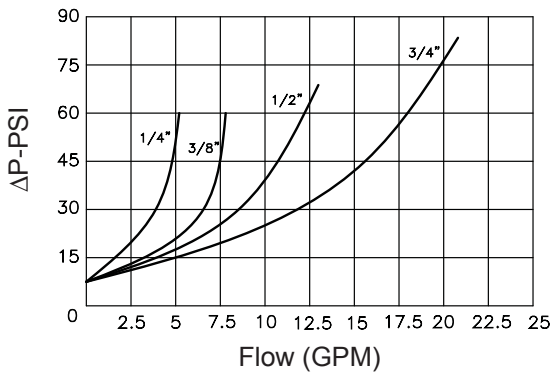
Example	N1/2
	S#8

Cracking Pressure

7	7 PSI
65	65 PSI

Material

1	Carbon Steel
---	--------------



FLOW, NEEDLE & CHECK VALVES

HYDRAULIC BALL VALVES

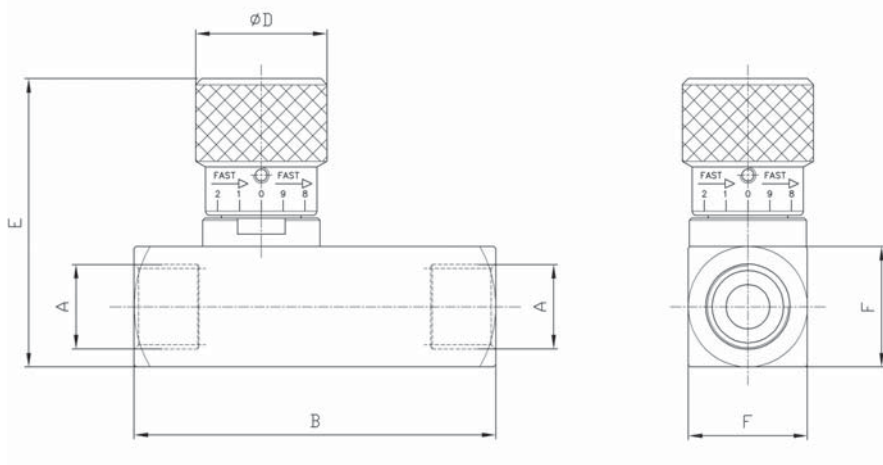
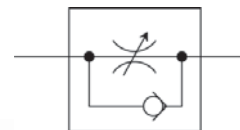
WELD COUPLINGS

FLANGES

Flow Control Valves (Carbon Steel)



- NPTF & SAE Connections
- Carbon Steel With Zinc Dichromate Plating
- Set Screw Allows Knob to be Locked into Position
- Graduated Knob & Spindle for Accurate Flow Control
- 7 PSI Standard Spring Setting
- Buna O-Ring / PTFE Stem Packing
- Temperature Range -4°F to +176°F



FLOW CONTROL VALVES						
A		B	D	E	F	MAX PSI
NPTF	SAE					
1/4	#4	2.60	1.18	2.67	0.98	5700
3/8	#6	3.00	1.18	2.67	0.98	5700
1/2	#8	3.58	1.29	2.79	1.18	5700
3/4	#12	4.43	1.65	3.70	1.57	5700
1	#16	5.55	1.65	3.93	1.77	5700

FLOW, NEEDLE & CHECK VALVES

HYDRAULIC BALL VALVES

WELD COUPLINGS

FLANGES

Model Code Breakdown

F N 1/2 - 1

Valve Series •

Thread Type •

N	NPTF Pipe Thread
S#	SAE Straight Thread
B#	BSPF Thread

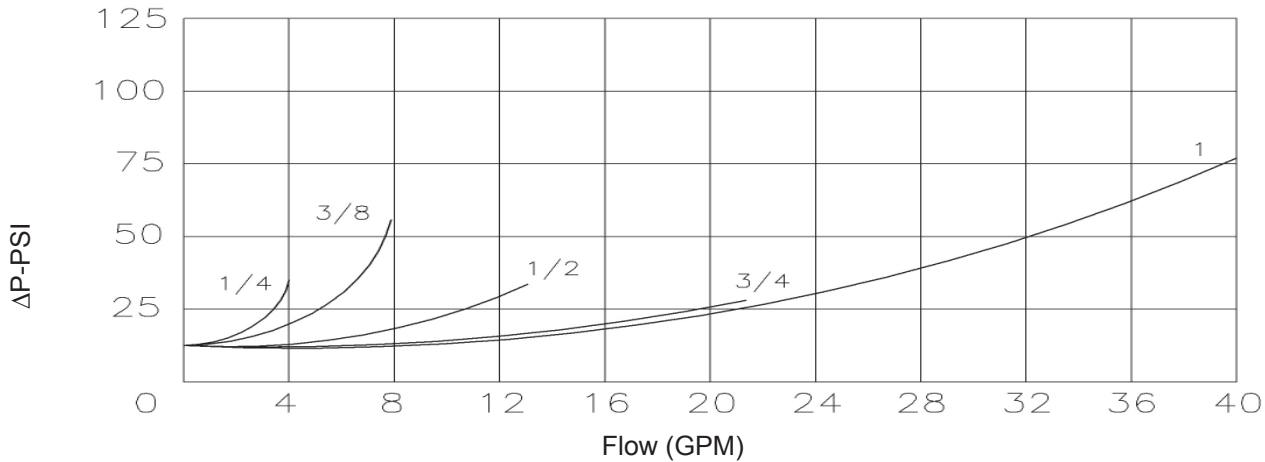
Material

1	Carbon Steel
---	--------------

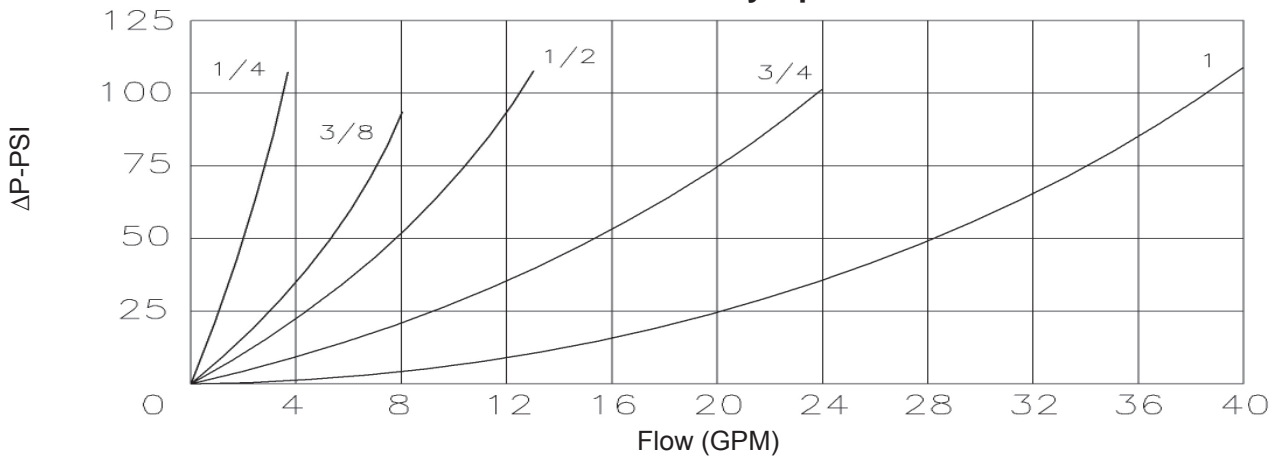
Thread Size

Example	N1/2
	S#8

Free Flow



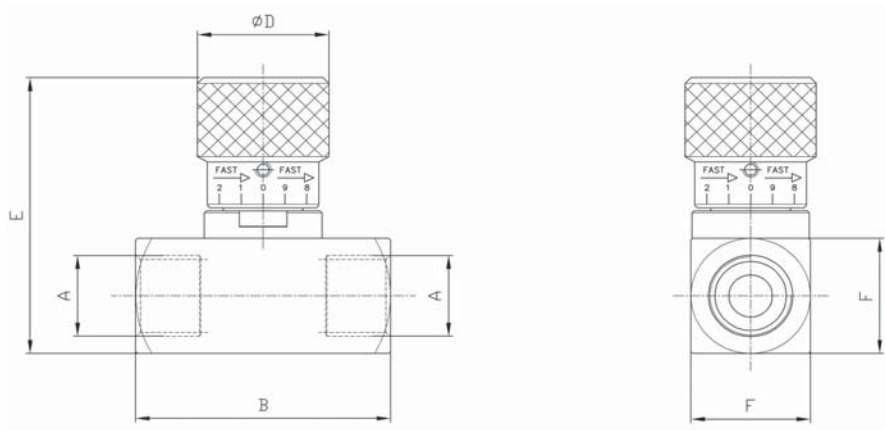
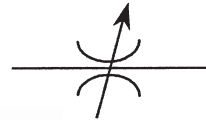
Metered Fully Open



Needle Valves (Carbon Steel)



- NPTF & SAE Connections
- Carbon Steel With Zinc Dichromate Plating
- Set Screw Allows Knob to be Locked into Position
- Graduated Knob & Spindle for Accurate Flow Control
- Buna O-Ring / PTFE Stem Packing
- Temperature Range -4°F to +176°F



NEEDLE VALVES						
A		B	D	E	F	MAX PSI
NPTF	SAE					
1/4	#4	2.12	1.18	2.67	0.98	5700
3/8	#6	2.12	1.18	2.67	0.98	5700
1/2	#8	2.51	1.29	2.85	1.18	5700
3/4	#12	3.19	1.65	3.70	1.57	5700
1	#16	4.00	1.65	3.93	1.77	5700

FLOW, NEEDLE & CHECK VALVES

HYDRAULIC BALL VALVES

WELD COUPLINGS

FLANGES

Model Code Breakdown

N N 1/2 - 1

Valve Series

Thread Type

N	NPTF Pipe Thread
S#	SAE Straight Thread
B#	BSPP Thread

Material

1	Carbon Steel
---	--------------

Thread Size

Example	N1/2
	S#8

Fully Open

