

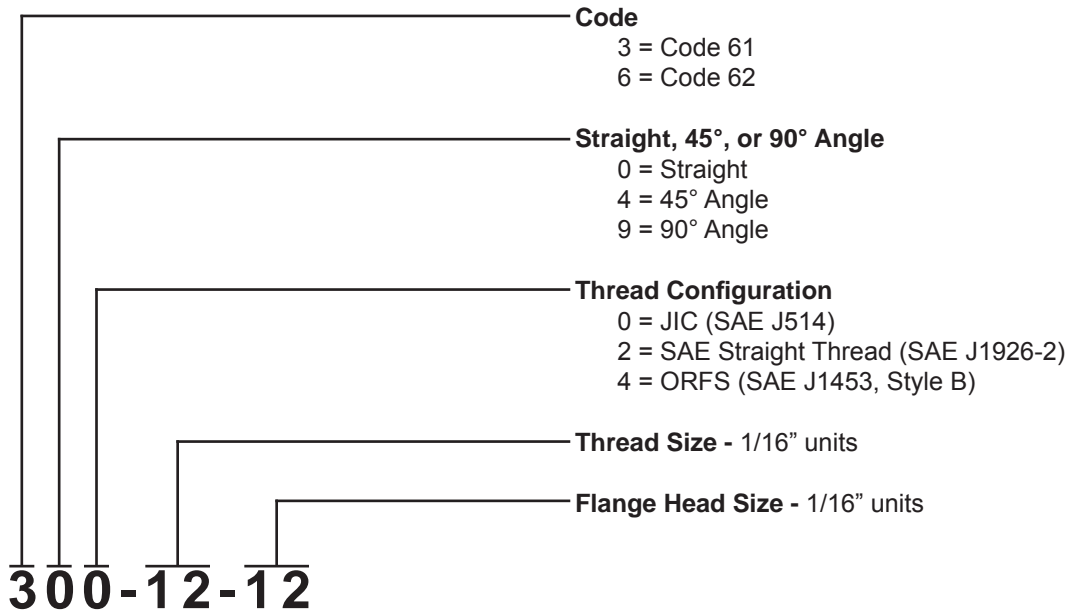
Split Flange Adapters

FLOW, NEEDLE & CHECK VALVES

HYDRAULIC BALL VALVES

WELD COUPLINGS

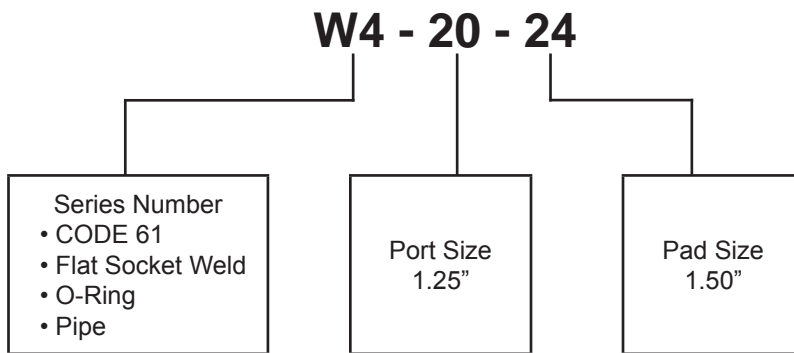
FLANGES



For additional jump sizes, please consult factory.

Flanges

Our basic part numbering system is simple to use. The explanation of our part numbering system is detailed below. The series number provides the greatest amount of information pertaining to the flange product. The port size and pad size simply refer to size only, with all sizes based on 1/16 of an inch.



NOTE #1 – All items available with mounting kit by simply adding suffix letter “U”.

NOTE #2 – All items available in stainless steel material by simply adding the suffix letters “SS”.

NOTE #3 – All items available with metric mounting holes simply by adding the appropriate suffix (IE: M10, M12, etc.).

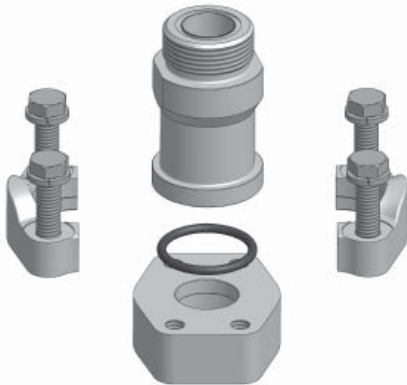
Pressure Ratings of SAE Flanges

CODE 61 SAE J518-1 / ISO 6162-1					
Dash Size	Inch Size	Max Working Pressure		Fastener Torque Value	
		PSI	MPa	Grade 8 UNC (lb-ft)	Grade 10.9 Metric (N-m)
-8	1/2"	5000	35	24	32
-12	3/4"	5000	35	44	70
-16	1"	4600	32	44	70
-20	1 1/4"	4000	28	68	70
-24	1 1/2"	3000	21	111	130
-32	2"	3000	21	111	130
-40	2 1/2"	2500	17.5	111	130
-48	3"	2300	16	218	295
-56	3 1/2"	500	3.5	218	295
-64	4"	500	3.5	218	295
-80	5"	500	3.5	218	295

CODE 62 SAE J518-2 / ISO 6162-2					
Dash Size	Inch Size	Max Working Pressure		Fastener Torque Value	
		PSI	MPa	Grade 8 UNC (lb-ft)	Grade 10.9 Metric (N-m)
-8	1/2"	6000	40	24	32
-12	3/4"	6000	40	44	70
-16	1"	6000	40	68	130
-20	1 1/4"	6000	40	111	130
-24	1 1/2"	6000	40	218	295
-32	2"	6000	40	332	550

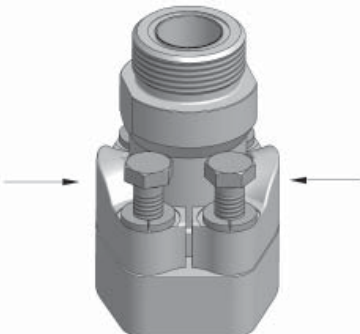
Split Flange Clamp

1 Clean the sealing surfaces and make certain they are free from nicks, scratches and burrs. Foreign material prevents a proper seal.



2 Lubricate the o-ring and ensure that it is properly installed as to prevent damage during installation.

3 Push the flange clamps towards the flange head and screw fasteners into flange pad. Continue to screw the fasteners until their heads just meet the split flange surface.



4 Torque the fasteners in diagonal sequence, in small increments, until final torque level is achieved. Torque values for flange connections listed above. Notice that the torque values vary according to size and fastener type.



Anchor Fluid Power split flange connections are manufactured according to SAE J518-1 and -2, as well as ISO 6162-1 and -2. These standards control dimensions, tolerances and plating. Please note that the above pressure rating chart refers to the flange connection. Adapting the flange to other connections, such as braze tube, welded pipe, or threaded ports / stud ends, could reduce maximum working pressure. Please consult with Anchor Fluid Power for pressure rating specific to your connection requirement.

