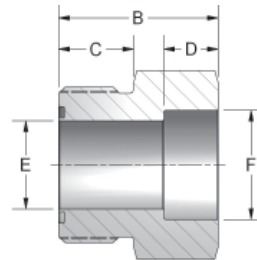
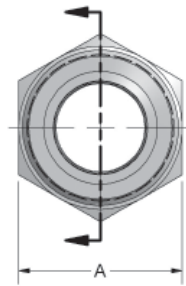


- AISI 1020 Carbon Steel Material
- Natural Finish
- O-Ring groove per SAE J1453, Style "B" for improved O-ring retention
- O-Ring not included



BRAZE-ON TUBE FITTINGS								
PART #	TUBE SIZE	ORFS THREAD SIZE	A	B	C	D	E	F
1453-04-04	1/4"	9/16"-18	.625	.780	.386	.250	.172	.252
1453-05-04	5/16"	9/16"-18	.625	.780	.386	.250	.172	.315
1453-06-04	3/8"	9/16"-18	.750	.780	.386	.250	.172	.377
1453-06-06	3/8"	11/16"-16	.750	.830	.441	.250	.264	.377
1453-08-06	1/2"	11/16"-16	.875	.950	.441	.375	.264	.502
1453-08-08	1/2"	13/16"-16	.875	1.010	.504	.375	.378	.502
1453-10-08	5/8"	13/16"-16	.937	1.060	.504	.375	.378	.627
1453-12-08	3/4"	13/16"-16	1.125	1.040	.504	.375	.378	.752
1453-14-08	7/8"	13/16"-16	1.250	1.09	.504	.375	.378	.877
1453-10-10	5/8"	1"-14	1.062	1.120	.610	.375	.484	.627
1453-12-10	3/4"	1"-14	1.125	1.150	.610	.375	.484	.752
1453-16-10	1"	1"-14	1.375	1.340	.610	.500	.484	1.002
1453-12-12	3/4"	1-3/16"-12	1.250	1.210	.670	.375	.609	.752
1453-14-12	7/8"	1-3/16"-12	1.250	1.210	.670	.375	.609	.877
1453-16-12	1"	1-3/16"-12	1.500	1.450	.670	.500	.609	1.002
1453-16-16	1"	1-7/16"-12	1.500	1.470	.689	.500	.811	1.002
1453-20-16	1-1/4"	1-7/16"-12	1.750	1.470	.689	.500	.811	1.252
1453-20-20	1-1/4"	1-11/16"-12	1.750	1.470	.689	.500	1.024	1.252
1453-24-20	1-1/2"	1-11/16"-12	2.000	1.470	.689	.500	1.024	1.502
1453-24-24	1-1/2"	2"-12	2.125	1.470	.689	.500	1.260	1.502
1453-28-24	1-3/4"	2"-12	2.125	1.470	.689	.531	1.260	1.752

FLOW, NEEDLE & CHECK VALVES

HYDRAULIC BALL VALVES

WELD COUPLINGS

FLANGES